

COVER DEWARPING MADE SIMPLE!



Straightener



ODM Straightener – Cover Dewarping Machine

Straightener takes warped cover boards, or covers and removes the curl that sometimes occurs during the board manufacturing process and/or, casemaking. The operator simply feeds the warped material into the machine where it is run through a three roller dewarping station. The amount of dewarping action is easily controlled with hand tightened adjustment knobs located on the top of the machine. When the boards exit the machine they come to rest in a well constructed material catching basin.

STANDARD FEATURES:

- Easy to operate, requires no special installation.
- Three roller dewarping station removes the curl.
- Built-in catching basin stacks finished covers.
- Adjustable knobs control the dewarping action.
- Increase productivity, reduce downtime.
- Mobile... can easily be moved.
- Virtually maintenance free.

Straightener



ODM COVER DEWARPING

Cover Dewarping Machine Offers Outstanding Value, Quality, and Performance!

SPECIFICATIONS & TECHNICAL DATA:

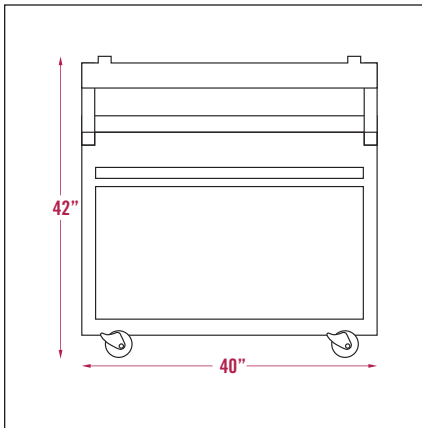
Maximum Cover Size: 30" wide by any length
Floor Space: 40" x 48"
Net Weight: 350 lbs.
Power Required: 115 Volt, 60 cycle 5 Amps

STRAIGHTENER MODEL

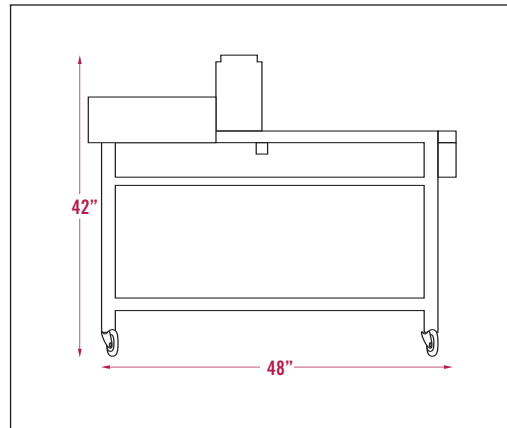
STANDARD EQUIPMENT for STRAIGHTENER COVER DEWARPING MACHINE INCLUDE:

- Easy to operate, requires no special installation.
- Adjustable knobs control the dewarping action.
- Three roller dewarping station removes the curl.
- Increase productivity, reduce downtime.
- Built-in catching basin stacks finished covers.
- Mobile... can easily be moved.

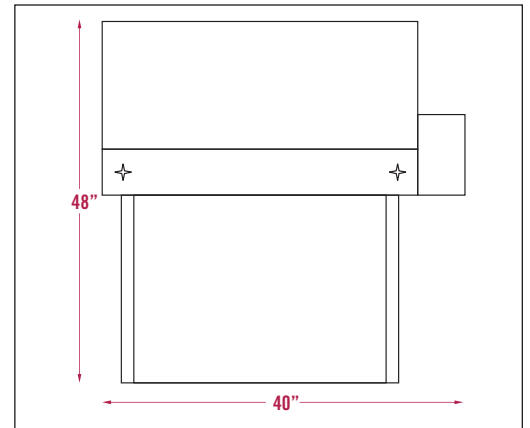
DIMENSIONS: FRONT VIEW



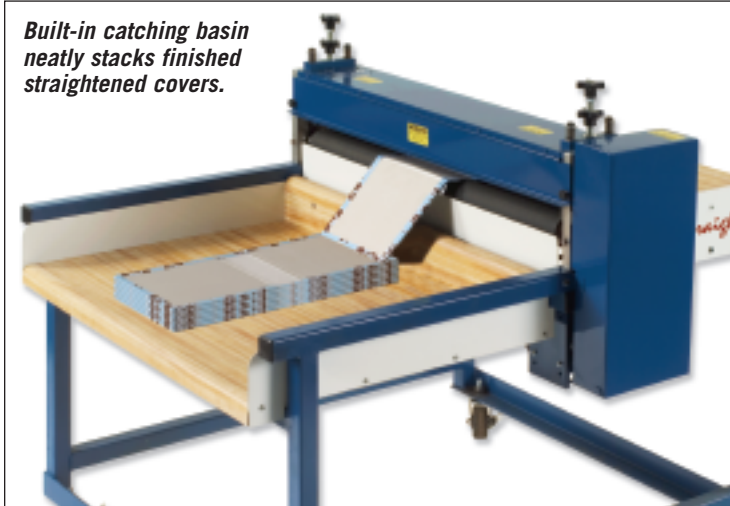
SIDE VIEW



OVERHEAD VIEW



Built-in catching basin neatly stacks finished straightened covers.



Operator simply feeds the warped cover boards into the straightener.



150 Broadway, Elizabeth, NJ 07206 • Tel: 908-351-6906 • Fax: 908-351-7156 • www.ODMachinery.com