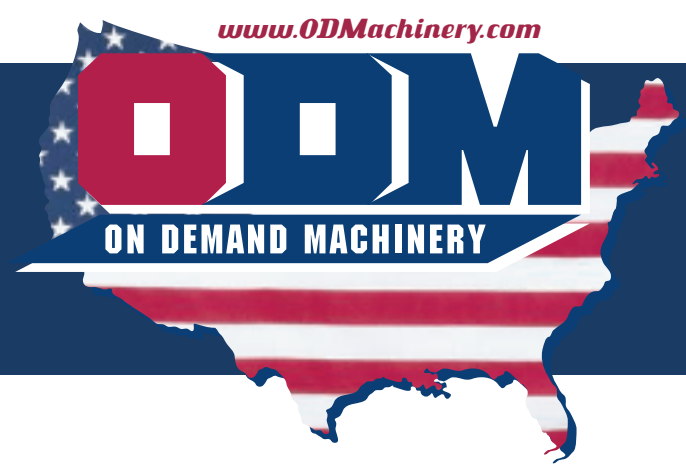


# Super Automation

## CASING-IN & BUILDING-IN MACHINES



## CASING-IN & BUILDING-IN AUTOMATED!



### Super Sticker™ Automated, Casing-in Machine Offers Outstanding Value, Quality and Performance!

SPECIFICATIONS & TECHNICAL DATA:	SUPER STICKER™ MODEL	STANDARD EQUIPMENT for SUPER STICKER™ AUTOMATED, CASING-IN MACHINE INCLUDES:
Maximum Book Size:	12" x 14" x 2 1/4"	• Easy-to-operate, touch screen control panel.
Minimum Book Size:	4" x 6" x 1/32"	• Self-adjusting machine requires no make-ready.
Output (per hour):	400 - 600 books	• Glue stations are easily removed for quick clean up.
Floor Space:	83.5" x 116.5"	• Conveyor belt for fast, convenient unloading of cased-in hard cover books.
Net Weight:	1800 lbs.	
Power Required:	2 line, 220V, 60 cycle, 13 Amps	
OPTIONAL EQUIPMENT AVAILABLE:		• Nordson hot melt attachment for additional adhesive in the joint area.
		• Auto-feed transfer station for Super Smasher™.

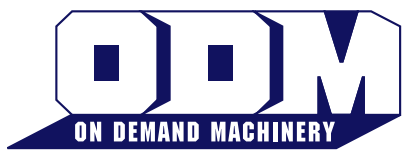


Optional Nordson hot melt paste attachment for additional adhesive in the joint area is available with our standard equipment: Cold Adhesive Pump and Auto Adjust Nozzle Spray for Precise Application.

Multi-Language Touch Screen Control Panel

### Super Smasher™ Automated, Building-in Machine Offers Outstanding Value, Quality, and Performance!

SPECIFICATIONS & TECHNICAL DATA:	SUPER SMASHER™ MODEL	STANDARD EQUIPMENT for the SUPER SMASHER™ BUILDING-IN MACHINE INCLUDES:
Maximum Book Size:	11" x 14" x 3"	• Automatic feed, hydraulic building-in machine
Minimum Book Size:	4" x 4" x 1/8"	• Completely self-adjusting
Output (per hour):	1080 books	• Easy-to-operate, touch screen control panel
Floor Space:	104" x 35"	• One smashing station plus three nipping stations
Net Weight:	2500 lbs.	• Nipping station up to 1500 lbs. of hydraulic pressure
Power Required:	(2) 220 Volt, 3 Phase	• Standard input unit: One station feed pocket
	20 Amp lines	• Standard output unit: Rear In-line chute delivery
	Air 70 PSI	• Optional: Auto-feed transfer station attachment



ODM FREE TECH SUPPORT: 908-351-6906

150 Broadway, Elizabeth, NJ 07206 | Tel: 908-351-6906 | Fax: 908-351-7156 | www.ODMachinery.com

ODM SUPERLINE



# AUTO-FEED SUPER LINE FOR HIGH VOLUME BOOKBINDING

## AUTOMATED, SUPER STICKER™ [CASING-IN] AND SUPER SMASHER™ [BUILDING-IN] MACHINES

*Increase your book production while lowering your labor cost to produce 400 to 600 'library-quality' hard cover books per hour!*



### **Super Sticker™ – Automated, Casing-in Machine**

Automated casing-in machine is designed for high volume, on demand binding operations. No special skills are required to operate this self-adjusting machine. Easy-to-use control panel allows the operator to format book size and control the position of wing. Operator just places the book block on the book carriage while Super Sticker™ is in the home position. Book covers are stacked on the left conveyor belt. Finished cased-in hard cover books are delivered on the right conveyor belt, and then automatically fed onto the transfer station for building-in.

- Produce 400 to 600 books per hour.
- Glue stations are easily removed for a quick clean up.
- Cover is laser measured for precise placement on the book block.
- Optional Nordson extra paste attachment deposits hot melt adhesive in joint area.

*Scan and View Demo Movie*



The ODM auto-feed Super Line is now available for seamless assembly line hard cover book production from the Super Sticker™ to Super Smasher™. Cased-in hard cover books come off the Super Sticker™ conveyor belt and are automatically transferred into the Super Smasher™ for building-in.

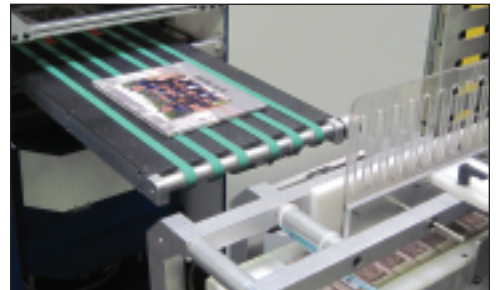
### **Super Smasher™ – Automated, Building-in Machine**

After the cased-in hard cover book enters the transfer station, it's automatically gripped, lifted and fed into the Super Smasher™ for the building-in process.

The Super Smasher™ is a self-adjusting, hydraulic building-in machine. It's easy to operate with a touch screen, LCD control panel that allows the operator to easily access machine features such as dwell time, servo homing counters, manually indexing, or troubleshooting a machine fault. Cased-in books are automatically fed into one smashing station then into three nipping stations where 1500 pounds of hydraulic pressure are applied to the joint area of each book, thus producing 'library-quality' hard cover books.

The three nippers provide dwell time in the joint area enabling the machine to run at speeds up to 18 books per minute. The rear in-line chute delivery can conveniently tie into most conveyors for increased workflow.

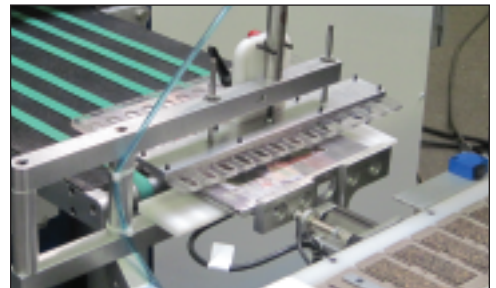
### **Auto-Feed Transfer Station Attachment Step-by-Step**



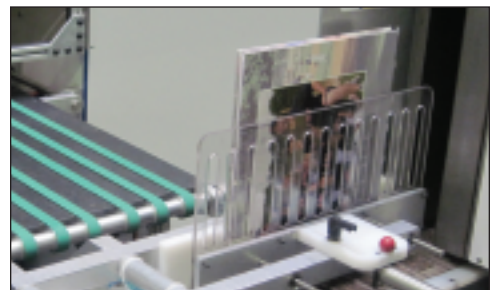
1. Cased-in book comes off Super Sticker™ conveyor belt.



2. Cased-in book enters the gripping mechanism.



3. Book is aligned and ready for transfer.



4. Hard cover book is lifted 90° into an upright position and loaded into Super Smasher™ via conveyor belt.



5. Electronic eyes align book, insuring a smooth transfer into Super Smasher™ for building-in process.